






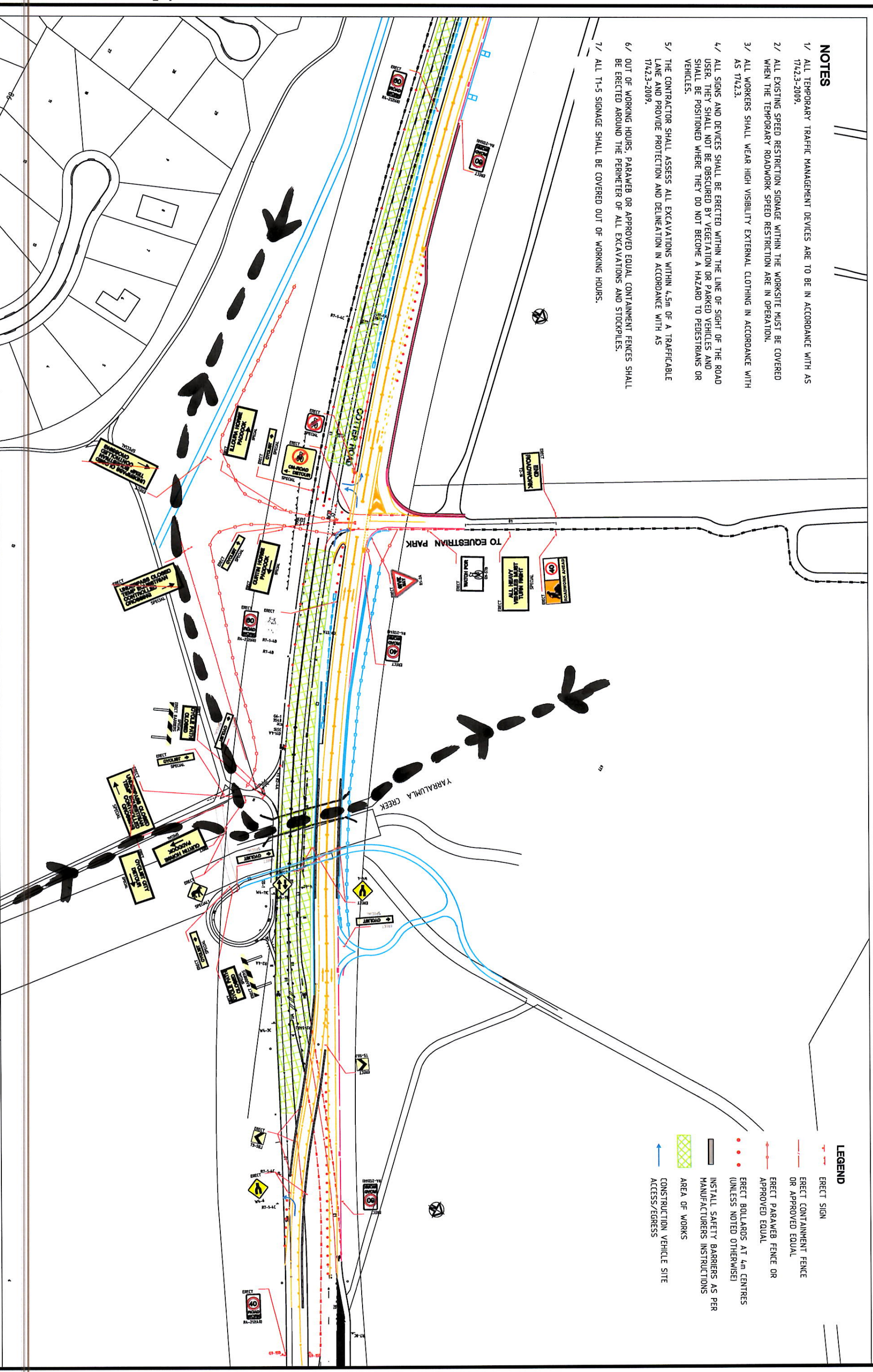


NOTES

- 1/ ALL TEMPORARY TRAFFIC MANAGEMENT DEVICES ARE TO BE IN ACCORDANCE WITH AS 1742.3-2009.
- 2/ ALL EXISTING SPEED RESTRICTION SIGNAGE WITHIN THE WORKSITE MUST BE COVERED WHEN THE TEMPORARY ROADWORK SPEED RESTRICTION ARE IN OPERATION.
- 3/ ALL WORKERS SHALL WEAR HIGH VISIBILITY EXTERNAL CLOTHING IN ACCORDANCE WITH AS 1742.3.
- 4/ ALL SIGNS AND DEVICES SHALL BE ERECTED WITHIN THE LINE OF SIGHT OF THE ROAD USER. THEY SHALL NOT BE OBSCURED BY VEGETATION OR PARKED VEHICLES AND SHALL BE POSITIONED WHERE THEY DO NOT BECOME A HAZARD TO PEDESTRIANS OR VEHICLES.
- 5/ THE CONTRACTOR SHALL ASSESS ALL EXCAVATIONS WITHIN 4.5m OF A TRAFFICABLE LANE AND PROVIDE PROTECTION AND DELINEATION IN ACCORDANCE WITH AS 1742.3-2009.
- 6/ OUT OF WORKING HOURS, PARAWEB OR APPROVED EQUAL CONTAINMENT FENCES SHALL BE ERECTED AROUND THE PERIMETER OF ALL EXCAVATIONS AND STOCKPILES.
- 7/ ALL T1-5 SIGNAGE SHALL BE COVERED OUT OF WORKING HOURS.

LEGEND

-  ERECT SIGN
-  ERECT CONTAINMENT FENCE OR APPROVED EQUAL
-  ERECT PARAWEB FENCE OR APPROVED EQUAL
-  ERECT BOLLARDS AT 4m CENTRES (UNLESS NOTED OTHERWISE)
-  INSTALL SAFETY BARRIERS AS PER MANUFACTURERS INSTRUCTIONS
-  AREA OF WORKS
-  CONSTRUCTION VEHICLE SITE ACCESS/EGRESS



REVISION	DATE	AMENDMENT / REVISION DESCRIPTION	DRAWN	TITLE	NAME	SCALE	DESIGNER	CLIENT	PROJECT TITLE	SCALE	PHASE	DRAWING NO.	REV
A	16.08.17	ISSUED TO THE CLIENT	PJB			0m 150m 300m 450m 600m SCALE: A1 1:750, A3 1:500	AURICAN Consulting Pty Ltd CONSULTING ENGINEERS	HUON CONTRACTORS PTY LTD	COTTER ROAD UPGRADE STAGE 2 WESTBOUND ROAD WORKS - STAGE 4 TTM PLAN - OUT OF WORK HOURS	AS SHOWN		HUO-COT-052	A

DO NOT SCALE OFF DRAWINGS. VERIFY ALL DIMENSIONS ON SITE.
 THE COMPANY AND INDUSTRY ARE NOT RESPONSIBLE FOR THE ACCURACY OF THE INFORMATION CONTAINED IN THIS DOCUMENT.
 THE COMPANY AND INDUSTRY ARE NOT RESPONSIBLE FOR THE ACCURACY OF THE INFORMATION CONTAINED IN THIS DOCUMENT.